



Flight Light Inc.
2708 47th Ave.
Sacramento, California, U.S.A.
95822-3806



+1.800.806.3548
+1.916.394.2800

www.flightlight.com
sales@flightlight.com

Model 800 LED Visual Approach Slope Indicator (VASI)

Designed to Meet the Special Requirements of Helicopter Landings

The helicopter Visual Approach Slope Indicator (VASI) was developed as a landing aid for helicopter flight. It is specially designed to accommodate the helicopter's steep angles of descent and deliberate speeds.

Three Color Design

Three wide horizontal beams of different colored light are projected in fan shaped array into the incoming flight pattern. The top beam (yellow) indicates a too high altitude of approach. The center beam (green) is the correct altitude and the lower beam (red) is a too low altitude. By staying within the green (correct altitude) light beam, the correct slope is maintained to touch-down. An ideal control for training students.

Normal Beam Dimensions

At a distance of one half mile: the green beam (correct altitude) is 300 feet high; the yellow beam (too high altitude) is 565 feet high; the red (too low) beam is 265 feet high. All of the three beams are 900 feet wide, on each side of vertical. The dimensions of this pyramid shaped cone of colored beams may be varied and ordered to accommodate special landing problems. Special color arrangements such as red on top, clear in the center and red of the bottom, are also available.

Visibility

Optical elements, combined with special color filters, provide clear color visibility. The VASI may be seen for up to one half-mile in daylight and up to one mile at night.

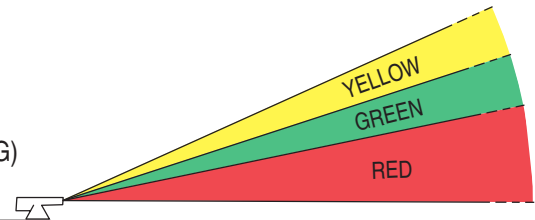
Height Settings

The VASI is easily adjusted. Normal height settings for the bottom of the green (correct altitude) beam range from 0° to as high as 15°. A 1/2° vernier scale provides accurate positioning. Heavy pressure screws are provided to secure the settings in place.



FRONTAL VIEW
OF ELEVATIONS
(WITH 6° SETTING)

HELIPORT



Light Source

The VASI has an energy efficient LED light source. The VASI is powered by 120/240VAC 50/60HZ.

Installation and Maintenance

The VASI is normally placed on the border of the landing area on the near side, facing into the landing pattern. It has a low profile, being 12 inches high, 8 inches wide and 16 inches long and is constructed of heavy cast aluminum that is weathertight and finished in orange polyester powder coating.



Visit our web site: www.flightlight.com



Flight Light Inc.
 2708 47th Ave.
 Sacramento, California, U.S.A.
 95822-3806



+1.800.806.3548
 +1.916.394.2800

www.flightlight.com
 sales@flightlight.com

**Model 800 LED
 Visual Approach Slope Indicator (VASI)**

Specifications:

Housing Aluminum casting
 Support Aluminum casting
 Lamp LED
 Mask Assembly Three colors
 Power Input 120/240VAC
 50/60HZ
 Dimensions:
 Height 12"
 Width 8"
 Length 16"
 Finish Orange polyester

LED VASI Photometrics:

Vertical

Color	Angle from Center	Lux at 3m
Amber	7	130
Amber	3	260
Green	3	115
Green	0	230
Green	-3	115
Red	-3	30
Red	-7	15

Horizontal

Color	Angle	Lux at 3m
Green	30 (full width)	40
Green	13	115

Visit our web site: www.flightlight.com