

Heliport High Power LED Floodlight (HL-HPFLED)

Applications

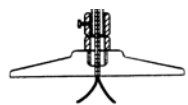
Our high power LED floodlight is specially designed for helipads, providing uniform surface lighting for landing and loading activities. The floodlight includes a 2" anodized aluminum breakable coupling (75-59E) and may be mounted on a base plate, floor flange or stake, sold separately.

Features

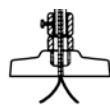
- Field adjustable power (140/100W) & color (3000/4000/5000K)
- Die cast aluminum housing with included glare shield
- Precision-crafted optics lens, NEMA 7H x 6V beam spread
- Field adjustable tilt angle maximizes helipad illumination
- Heavy-duty slipfitter and trunnion mount options included
- UL and DLC 5.1 listed, IP65 rated
- Meets FCC Part 15, Part B, Class A standards for conducted and radiated emissions
- 3-pin twist lock photocell and shorting cap included with NEMA/ANSI C136.10 3-pin twist lock receptacle
- LED chip lifetime: L70 >100,000 hrs @ 77°F (25°C) ambient fixture temperature
- 0-10V dimming driver with 12V AUX power tap and 6kV surge protection
- Ambient operating temperature: -40°F to 122°F (-40°C to 50°C)
- Power factor: >.95
- THD: <20%
- Height: 21"; Weight: 16.1 lb. (includes glare shield & coupling)
- Warranty: 5 Years



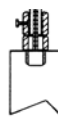
Heliport High Power LED Floodlight (base plate sold separately)



Base Mounted
8.5" or 12"
Base Plate
(sold separately)



Floor Flange Mounted
6.5" Floor Flange
(sold separately)



Stake Mounted
30" Angle-Iron
Mounting Stake
(sold separately)



Field adjustable power (140/100W) & color (3000/4000/5000K)



3-pin twist lock photocell included for dusk-to-dawn operation

Specifications

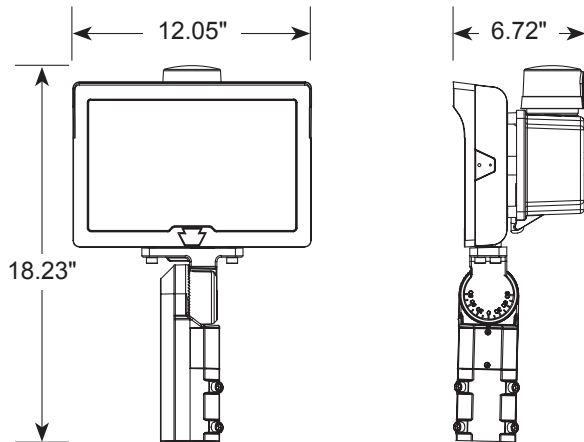
Product #	Selectable Wattage	Selectable CCT	Lumen Output	Efficacy	Input Voltage	CRI	Dimming	Mounting	Dist Pattern	Photocell	Rated Life	Legacy Equivalent
HL-HPFLED	140W	3000K	17500	125 lm/W	120 - 277V	>80	0-10V	Universal: 2-3/8" Slip Fitter or Trunnion	7H x 6V	Included	50,000 Hours	400W MH
		4000K	20300	145 lm/W								
		5000K	18900	135 lm/W								
	100W	3000K	13500	135 lm/W								
		4000K	15500	155 lm/W								
		5000K	14500	145 lm/W								

+1.800.806.3548 USA
+1.916.394.2800 Worldwide

www.flightlight.com
sales@flightlight.com

Flight Light Inc., 2708 47th Ave.
Sacramento, CA, 95822, USA

Dimensions (shown without glare shield and coupling)



BA-6806K125-Y

6.5" Rigid Floor Flange (2" Thread)

Used for mounting helipad floodlights to concrete, asphalt, decks or metal platforms.

Specifications

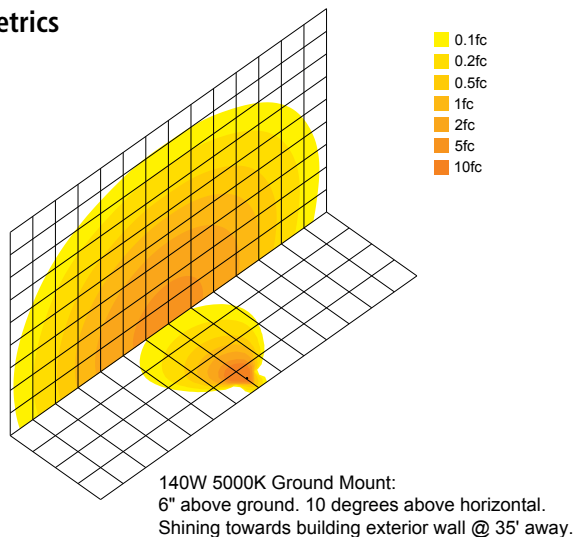
- Colors: Yellow, Red, Silver, Marine Treated
- Height: 1.3125"
- Top Dimensions: 3.3125" OD, 2" ID
- Bottom Dimensions: 6.5" OD
- Bolt Circle: 5"
- Bottom Flange Bolts: 8 bolts not included: flat head, 5/8-16 x required depth
- Thread: 2" NPT
- Material: Forged black steel
- Part #: BA-6806K125

Exploded View (shown without glare shield and coupling)



Remove protective covers to access power and color switches.

Photometrics



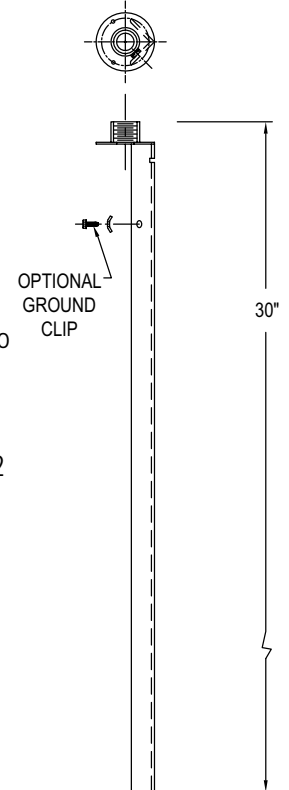
BA-2202

L-895 Mounting Stake (2" Thread)

Galvanized mounting stake is driven into the ground to provide a stable base.

Specifications

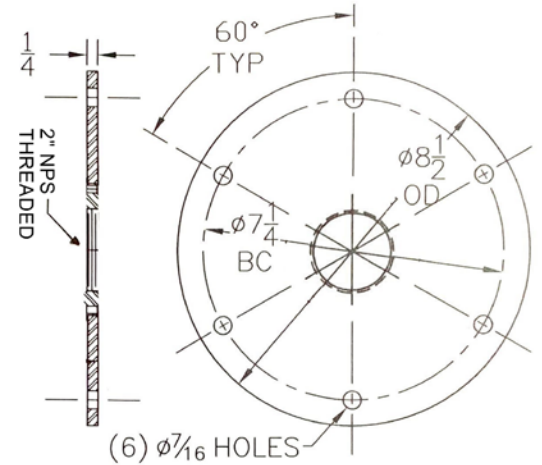
- Galvanized to ASTM-A123/A123M-02
- 2" - 11-1/2 NPS
- Length (mm): 30" (762)
- 3.5" diameter hub
- Part #: BA-2202



Base Plate for L868AA
5" Shallow Base
(BA-1932AA-25)

Specifications

- Dimensions: 8.5" diameter x .25" thick
- Bolt Circle: 7.25"
- 2" NPS
- Material: Hot rolled steel
- Finish: Aviation yellow powder coat
- Includes (6) 3/8-16 x 1" stainless steel hex head cap screws
- Part #: BA-1932AA-25



Flange Flatness is ± 0.10 [254mm]

Notes:

- 1.) Grommeted Holes are placed @ 0° & 180°
- 2.) 2" Drain Hole is Placed in Bottom
- 3.) One internal Strap

Section AA

Continuous Watertight Weld

Ground Strap[s] As Specified

2.000 Drain

9.000

5.000

.375

.25

.109 Minimum

1.313

.109 Minimum

$\phi 1.688$ at 0°-180° for 2x-1" Conduit Grommet

$\phi 6.550^{+.010}_{-.000}$

$\phi 2.000$ Drain Hole in Bottom

$\phi 8.625^{+.050}_{-.000}$ O.D. of Top Ring

$\phi 7.250 \pm .010$ Bolt Hole Circle

[12x] $\phi .375$ Drilled Thru Top Tap 3/8"-16

[12x] 30°

(6) $\phi 7/16$ HOLES

Approval

x/x=.030
 .xx=.010
 .xxx=.005
 .xxxx=.0005

All dimensions in inches unless otherwise specified

Flight Light Inc. • www.flightlight.com			
SPECIFICATION:			
PART NUMBER:		DATE: 10/11/2012	
REV:	SIZE: A	SCALE: 1:3	SHEET OF 5
DRAWN BY:	ENGINEER:	CHECKED BY:	
TITLE: 5" Shallow Base (P/N BA-725-5-2P1)			