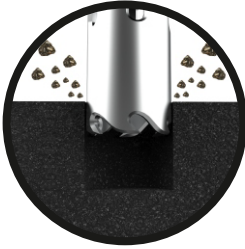
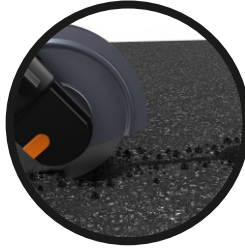


HL-690 & HL-692 Non-Base Installation Manual

Changing or not completing the described installation process can result in suspension of warranty. This installation method is not recommended by the FAA. The FAA recommends installing heliport fixtures with base cans.



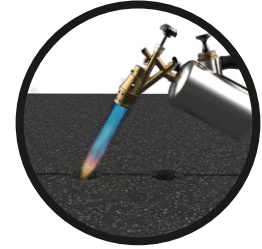
After deciding the location where the fixture will be installed, drill a hole having a minimum diameter of 9.1" (230 mm) and a minimum depth of 5.1" (130 mm).



Using a disk cutter, open a connection between the holes with 1.2" (30 mm) width and 5.1" (130 mm) depth.



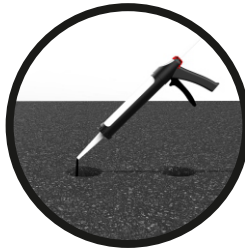
Brush any debris or dust from the hole resulting from drilling.



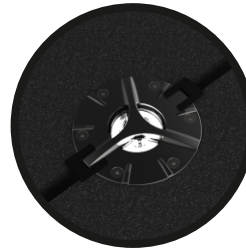
Dry the hole with a blowtorch to remove any moisture that may compromise the adhesion and effectiveness of the grout.



Add the installation accessory to each fixture that will be installed. The accessory will help align and keep the fixture in place during the grout drying time. This accessory will be removed at the end of the installation.



Pour ± 15.4 lb. (± 7 kg) of ULTRAFLOW 4000/8 grout in the hole and insert the fixture. Remove any excess grout.



The grout drying time may change depending on weather conditions. Consult the grout data sheet for more information. After the grout has dried, the top part of the installation accessory should be broken and removed.

Installation Accessory

Installation accessory for easy leveling

