



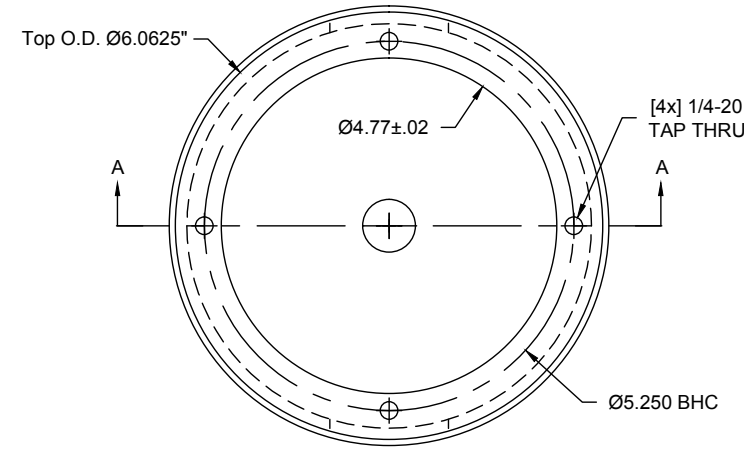
Flight Light Inc.  
 2708 47th Ave.  
 Sacramento, California, U.S.A.  
 95822-3806



+1.800.806.3548  
 +1.916.394.2800

www.flightlight.com  
 sales@flightlight.com

## 6" Deep Base Can (P/N BA-525-6)

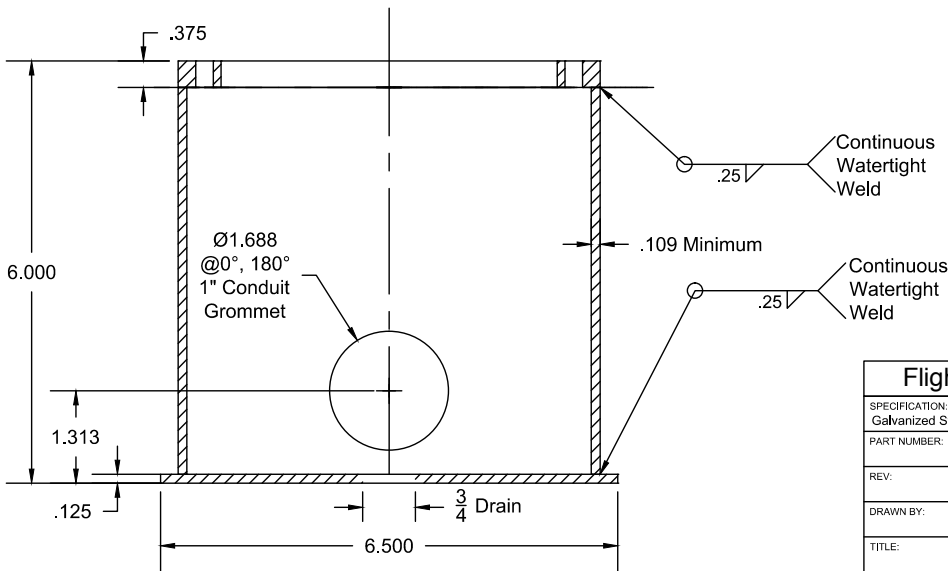


**Notes:**

- 1.) Grommets holes are placed @ 0° & 180°
- 2.) Flange Flatness is ±.010 [.254mm]
- 3.) 3/4" drain is standard

**Additional Product Information:**

- 1) Bolt holes are drilled and tapped after galvanizing.
- 2) Conduit holes are located on the bolt hole axis of the flange with an angular tolerance of +/- 1.
- 3) Four 18-8 stainless steel Phillips, Flat Head Countersunk Screws 1/4-20UNC X 1" fully threaded bolts shipped with each container. Wood lid has two holes drilled at 0-180. Two bolts are shipped loose.
- 5) This product is hot dipped galvanized in accordance with standard specifications for zinc coating on iron and steel hardware. ASTM A 153, ASTM A 385, ASTM A123.



x/x=.030  
 .xx=.010  
 .xxx=.005  
 .xxxx=.0005

All dimensions  
 in inches  
 unless otherwise  
 specified

<b>Flight Light Inc. • www.flightlight.com</b>			
SPECIFICATION: Galvanized Steel			
PART NUMBER:		DATE:	
REV:	SIZE:	SCALE:	SHEET OF
	A	1:2	1 OF 1
DRAWN BY:	ENGINEER:	CHECKED BY:	
TITLE: <b>6" Base (P/N BA-525-6)</b>			



Visit our web site: [www.flightlight.com](http://www.flightlight.com)